

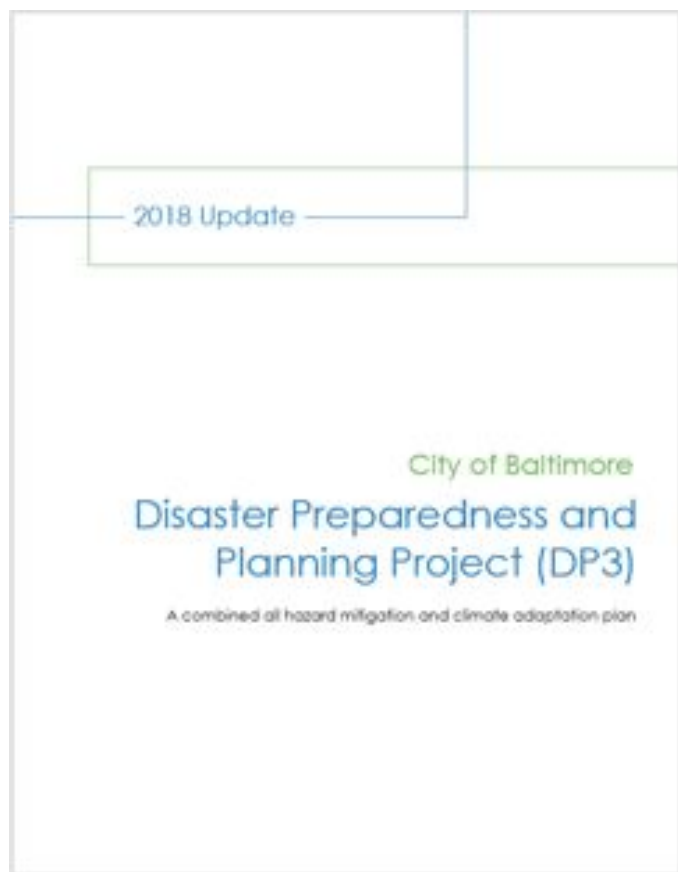


# THE BALTIMORE CITY COMMUNITY RESILIENCY HUB PROGRAM

Aubrey Germ  
Climate and Resilience Planner  
[Aubrey.Germ@baltimorecity.gov](mailto:Aubrey.Germ@baltimorecity.gov)  
410-396-5917



## Foundation: Baltimore's Hazard Mitigation Plan



“Increase the number of Resiliency Hubs in the city...”

“Develop training and guidance documents for Resiliency Hub leaders that detail the scope of services (include checklist and instructions for opening, running, and closing)...”

“Initiate community resiliency planning, outreach, and support...”



## DP3 Identified Natural Hazards

- **Flooding:** Flooding and Dam Failure
- **Coastal Hazards:** Tropical Storms and Hurricanes; Sea Level Rise; and Storm Surge/Coastal Inundation; Tsunami
- **Precipitation Variability:** Thunderstorms, w Lightning and Hail; Winter Storms and Nor'Easters; Drought
- **Wind:** Thunderstorm Winds & Derechos; TORNADOS
- **Extreme Heat:** Heat and Air Quality
- **Land:** Earthquakes; Landslides/subsidence; Sinkholes
- ...but we are in an era of compounding crises
  - **All-hazards approach**



Severe flooding along the Jones Falls River in 2018



## Baltimore Community Resiliency Hub Profile

Baltimore's Community Resiliency Hub partners are:

- **Trusted, frontline, service-based community organizations** with strong leadership
- Located in **climate-vulnerable neighborhoods**
- Well-connected and well-positioned to reach those who are **most at risk**
- Willing to serve as a **safe space** in times of crisis
- Willing to **distribute resources** and provide access to items such as drinking water, emergency food, phone charging, and timely information
- Willing to partner with the City to become connected to additional resources, **elevate community concerns**, and participate in meetings/trainings
- Able to **spread awareness** and be a voice for climate risk and preparedness

\* We Ask: Which orgs already do this kind of work that are mission-aligned?

\*\* Orgs **do not** need to have all the bells and whistles to be considered a Hub



## Community Resiliency Hub Program Goals

- Enhance the **capacity and adaptability of community organization** to provide continuity of services and essential resources in all-hazards
- Help under-resourced communities prepare for, respond to, and recover from disasters by providing more **focused support, investment, and resource delivery from the city**
- Help the city respond and adapt more effectively to the **evolving needs** of communities
- Improve relationships and **build trust** between the City and community
- Provide a **safe space** for highly vulnerable residents that is city-supported but not city-led
- Offer a **pathway for elevating community concerns** to city government decision-makers
- Honor the fact that faith and service-based orgs are critical **community anchors and pillars of strength**
- Center **community-driven and mission-aligned** preparedness and resiliency efforts



## Program Components (\*Over Time)

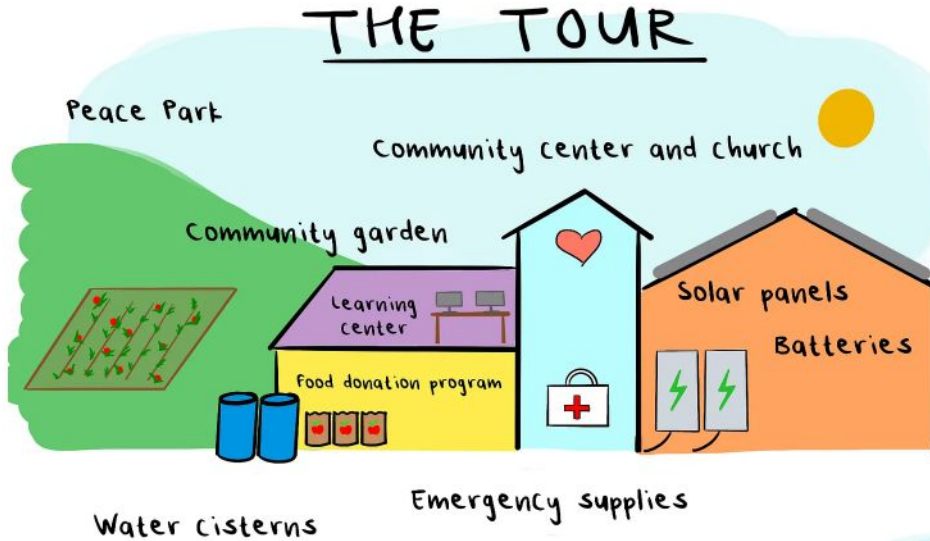
Grant-funded or in-kind city support:

- **Preparedness trainings / workshops** (i.e. asset mapping, scenario planning, etc) (BoS, OEM, sometimes grant funded)
- Frequent Hub Partner meetings and convenings to support **peer-to-peer learning** and information sharing amongst Hub Leaders and residents
- High quality **emergency supplies** for each Hub (Grant funded, BoS, OEM staff support)
- **Solar power and battery back-up** (State grant funded, solar project team, FEMA grant in progress)
- **Energy efficiency** upgrades to buildings (State grant funded, DOE grant in process, solar project team, in progress)
- **Focused communications, resource delivery**, education, and support from City (BoS during blue skies/prolonged emergencies like COVID, OEM in acute emergencies)
- **Grant funding** to the Hubs for site-specific needs, emergency relief, or wish-list needs (BoS)

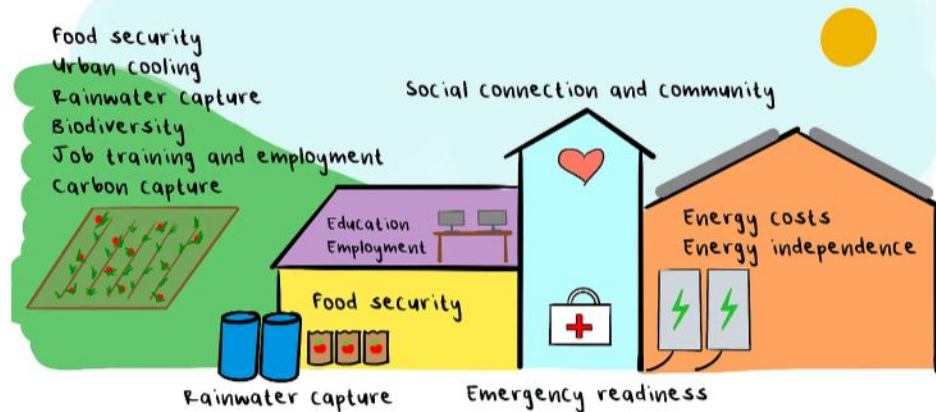


# Hub Profile: Stillmeadow Community Fellowship

## THE TOUR



## THE CO-BENEFITS TOUR



↪ Climate, social, and economic resilience!

<https://parachuteearth.substack.com/p/street-notes-4-the-case-for-baltimore>



# Partnership



## **Baltimore City Office of Sustainability (BoS), Department of Planning**

- Climate and Resilience Planner (and Resiliency Hub Program Manager)
- Sustainability Director

## **Office of Emergency Management (OEM)**

- Director of Emergency Management
- Planning Section Chief
- Director of Preparedness

## **Office of Public Health Preparedness and Response, Baltimore City Health Department (BCHD)**

- Director of Emergency Preparedness
- Deputy Director of Emergency Preparedness
- Emergency Planner

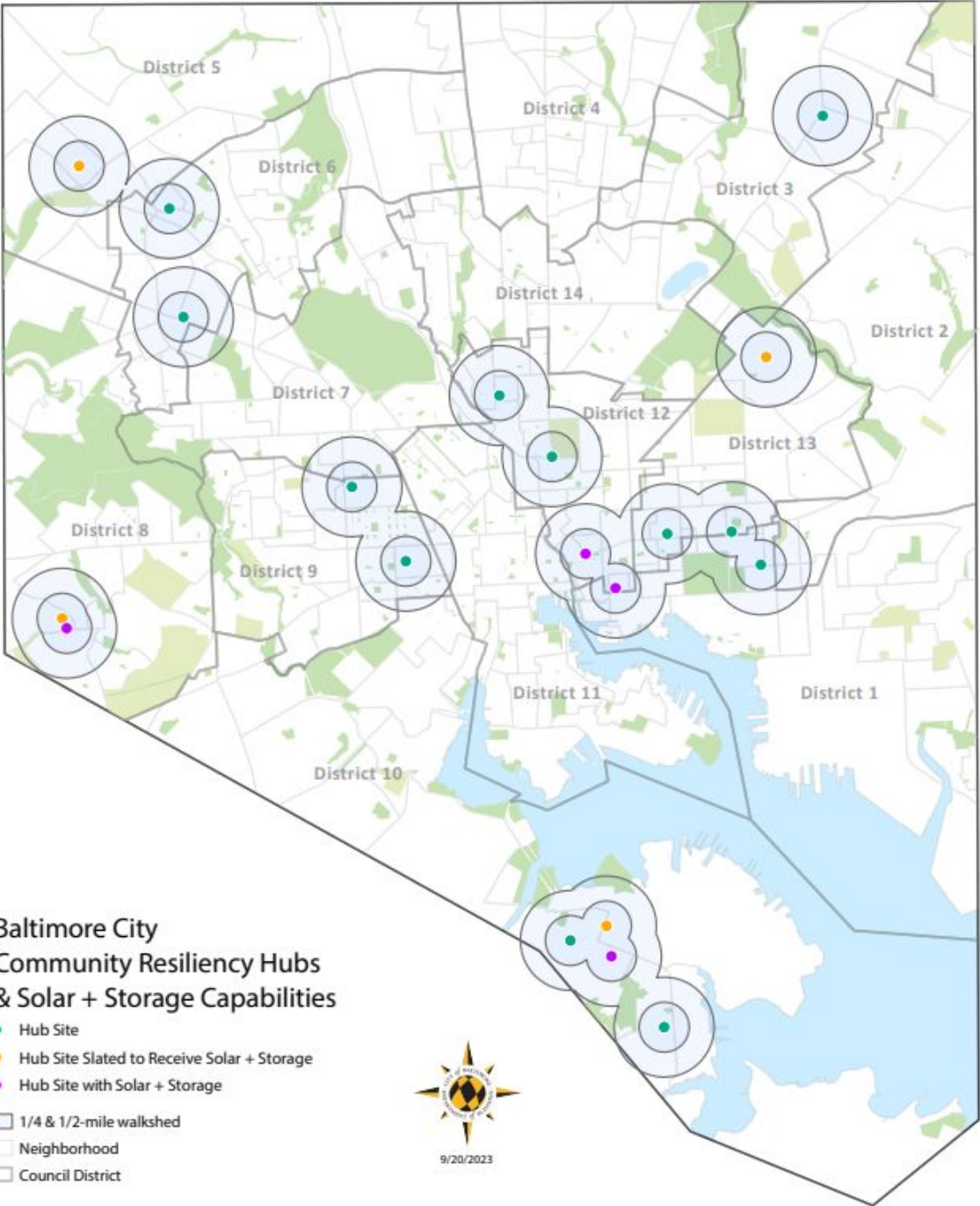
## **Energy Project Team**

- Groundswell, Dots Energy, SunCatch Energy, Healthy Neighborhoods Inc
- Maryland Energy Administration, MD Dept of Emergency Management, FEMA





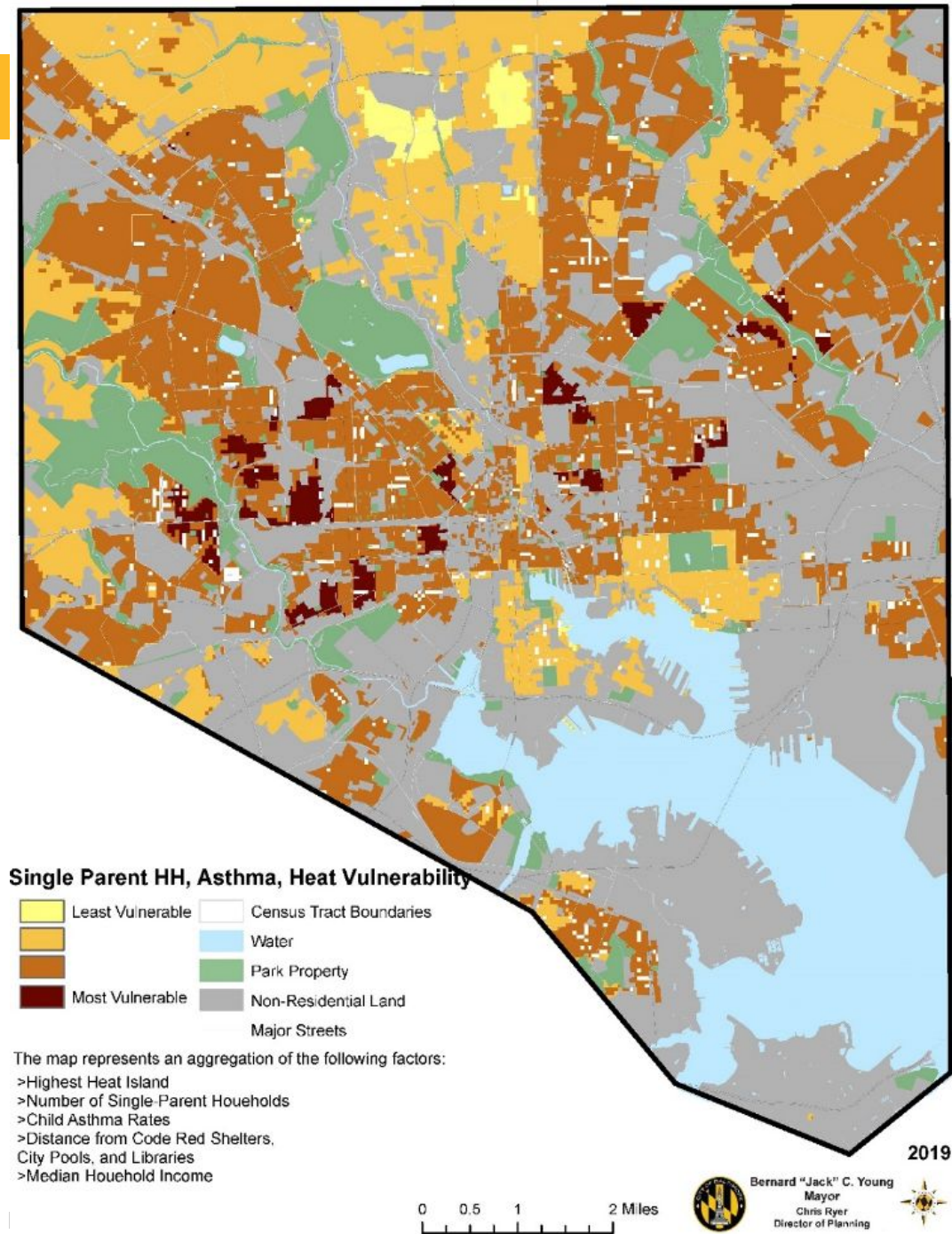
20 partners and growing



# Vulnerability Mapping

Identifying vulnerability hotspots for new Hub partnerships

- Urban Heat Island
- Single Parent Households
- Child Asthma Rates
- Median Household Income
- Distance from Cooling





# Working Together: COVID-19 and Adapting to Evolving Needs

## Hubs:

- Served as critical food distribution sites, COVID testing sites, and vaccination clinics
  - Some were small-scale pantries prior to COVID but scaled up significantly
  - Some had never done food before
  - **Adapted to community needs**
- Reached hard-to-reach populations
  - Well-located
  - Deep volunteer networks
  - Non-city led (more trusted)
- Voiced community needs and concerns

## City:

- Elevated Hub concerns and sought answers/responses
- Provided quick connections to food, funding, COVID testing, and vax resources
- Connected Hubs to PPE donations and distributions
- Connected Hubs to Code Red water and box fan distributions
- Provided technical grant writing and grant awareness support
- Frequent coordination and communication



## Response: # of Produce Boxes Distributed by Resiliency Hub Partners

Resiliency Hub partner location	# of boxes distributed per month	Overall (March 2020 – August 2023)
First Mount Calvary Baptist Church (Sandtown-Winchester)	200	9,240
The Door (CARE Community)	400	78,700
Stillmeadow Community Fellowship (Beechfield)	250	21,040
City of Refuge (Brooklyn)	400	46,150
Breath of God Lutheran Church (Highlandtown)	200	27,410



# Solar Transformation - City of Refuge Resiliency Hub



Before



Roof Replacement



Solar Installation Complete (Jan 2021)



Battery storage system



Side view of building





# Response: Franciscan Center Aids Community During Fire - January 2022

 **The Franciscan Center of Baltimore**  
22m · 🌐

Thank God for our [Baltimore City Fire Department](#).


These men and women have been at this fire since early in the morning.

Our kitchen team is on site to offer coffee and tea to the fire department, support personnel and our neighbors who have lost water because of the fire.

The kitchen team is also preparing breakfast sandwiches as we write this message to make sure everyone has something to eat.



+8

 **The Franciscan Center of Baltimore**  
52m · 🌐

Breakfast sandwiches are being served to the emergency personnel and residents in our community.





# Response: Food and Sandbag Distribution Efforts in Summer 2020





# Resiliency Hub Workshop - Asset Mapping

## First Mount Calvary: Sandtown-Winchester & Midtown Edmondson & Bridgeview/Greenlawn

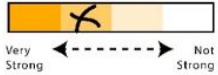
### Your Edits/ Notes for Your Map

#### [1] Fill in the Gaps

Mark anything that is missing on this map! (Places, institutions, people, etc.)

#### [2] Your Relationships

Mark the strength of your Hub's relationship with surrounding spaces and institutions:



#### [3] Opportunities

Using the symbols below, mark down the opportunities a space or institution has to strengthen your Hub

- ★ Could help spread word
- Could provide resources (like ice, water, etc.)
- Could share knowledge (on gardening, environment, health, etc.)
- △ Other

### Legend

- Hub
- Public School
- Non-profit/ City agency
- Religious Institution
- Commercial/ Store
- Public Housing
- Nursing Home
- City Park
- Other Green Space
- Pool
- Railroad Track







# Resiliency Hub Workshop - Hazard Scenario Training




**Baltimore Resiliency Hub  
Emergency Planning Workshop**

Presented by the Baltimore Office of Sustainability,  
the Mayor's Office of Emergency Management,  
and the Baltimore City Health Department

Saturday, October 18, 2015  
11:00am | Stillmeadow Community Fellowship, Baltimore, MD

  **BALTIMORE CITY HEALTH DEPARTMENT**





## Questions & Comments?

**Aubrey Germ, Climate and Resilience Planner**

**[Aubrey.Germ@baltimorecity.gov](mailto:Aubrey.Germ@baltimorecity.gov)**

**410-396-5917**

